

QOTO

INTELLIGENT WATER VALVE

Thanks for choosing QOTO as your family smart irrigation device.
Please read the user manual carefully before operating. Please keep
the user manual for future reference.



CE FCC ROHS ISO9001

If you have any questions or suggestions about the manual,
please contact us by email or telephone

Tel: +86-755-2307 7086

E-mail: Service@ptvalve.com

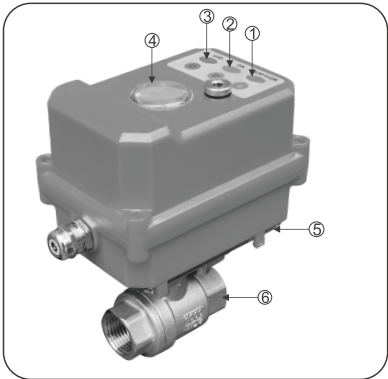


<https://smartapp.tuya.com/smartlife>
Scan QR code to download APP

Item List

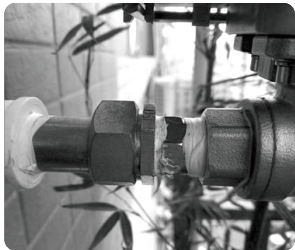
- QT-02 (1 pcs)
- Power Adaptor (1 pcs)
- Hand Tool (1 pcs)
- Installation Instruction (1 pcs)

Product Introduction



- ① Button 'Wifi/Lock'
- ② Button 'On'
- ③ Button 'OFF'
- ④ Valve Position Display
- ⑤ Hand Tool
- ⑥ Inner Thread Ball Valve

Product Installation



Plumb Connection



Power Supply Connection

Manual Operation

Switch On&Off

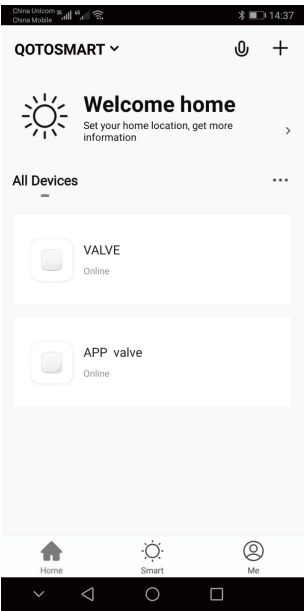
- After installation of the product, Wifi/Lock LED is red(normally the LED is off), the product is in lock status.
- Press button 'Wifi/Lock' for 2 seconds to unlock QT-02, wait till the LED turned to green.
- Press button 'On',the valve is opening to the max levele.
- Press button 'OFF', the vavle is closing.

Water Flow Adjustment

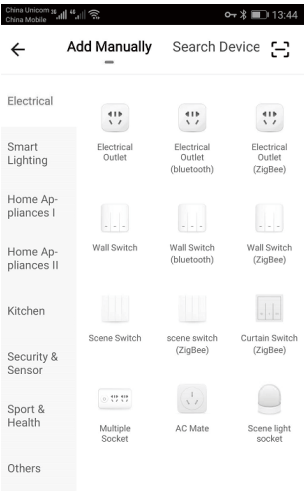
- When the valve is opening, press button 'ON', it will stop opening and the water is stayed on present flow current.
- When the valve is closing, press button 'OFF', it will stop closing and the water is stayed on present flow current.

Wifi Connection/Device Configuration

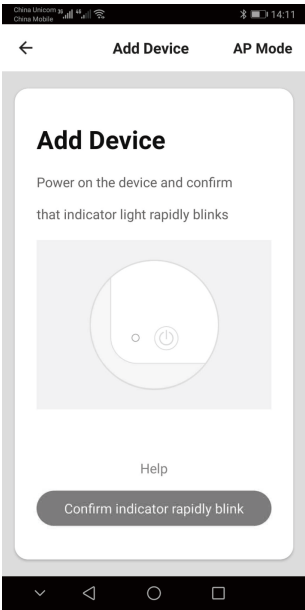
- Ensure QT-02 is within effective range of Wifi Hotspot and smart phone APP is connected with Wifi.
- Press button 'Wifi/Lock' for 4 seconds till the LED is flickering, then QT-02 start connecting to Wifi network
- Open Tuya/Smart Life APP, tap “+” on the up-right corner.



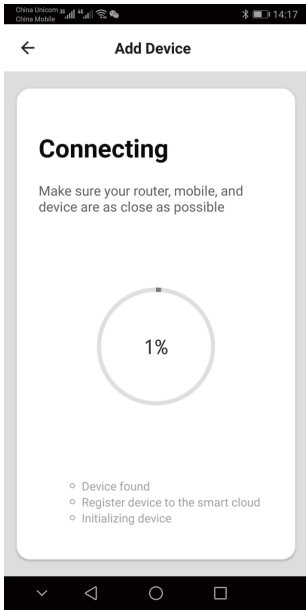
- Click any catalogue on this page to enter into next page for network setting.



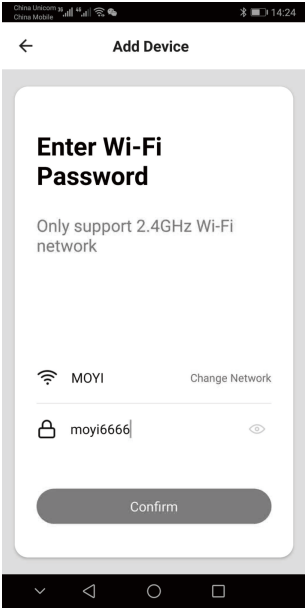
- Make sure the “Wifi/Lock” LED is flickering and QT-02 is under working mode. Tap the red bar to continue.



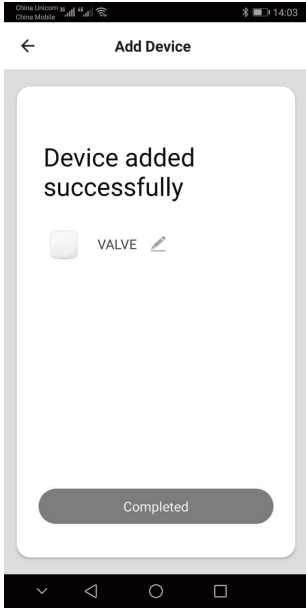
- Network connecting is processing, and device configuration begins, the process may last for a minute.



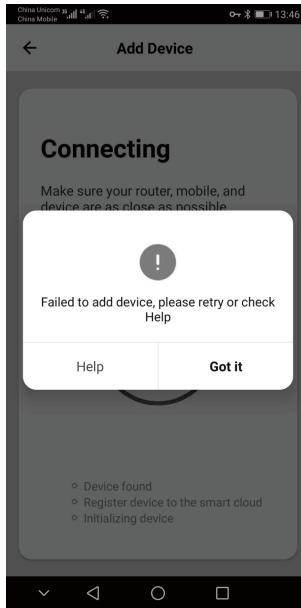
- Verify wifi code and make sure its under the same wifi network with QT-02, click “Confirm” .



- When configurations succeed , notice will be shown on this page. If connection failed , message 'connection failed' will be shown on smart phone APP.



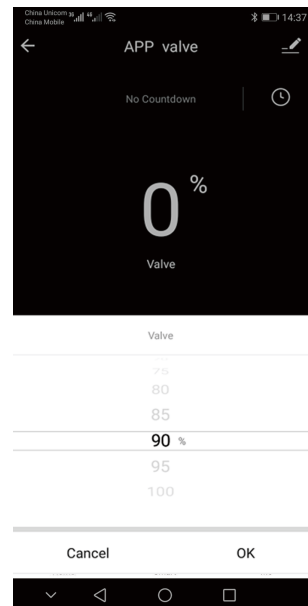
- If configurations failed ,please try reconnect wifi network and device configuration.



Smart Control

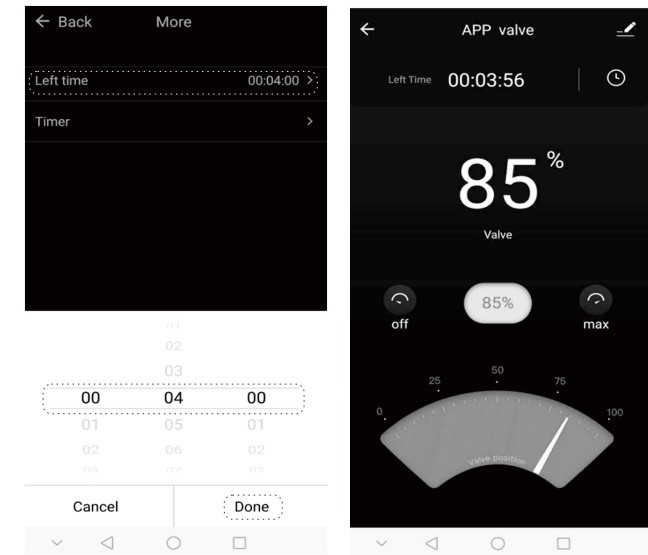
Switch On/Off

- Open App on smart phone, find device 'QT-02'.
- Click 'Max', then the valve is opening. When the valve is opened to the max level, valve position' will show 'max'.
- When QT-02 is working, click 'OFF', then the valve is closing till the 'Valve Position' showed 'Off'.
- When QT-02 is working, click 'Valve Position' to set the water flow current you want or you could set the water flow from the beginning.



Count Down

- When QT-02 is working, Click 'Count Down', choose the time as how long the irrigation process is going to continue (Hour/Minute/ Second).
- Back to the front page of operating interface on APP, 'Left Time' is showing actual remaining time for the close of valve.
- When 'Left Time' showed '00:00:00',the valve will automatically close.
- Click 'OFF' during count down process, the valve will close directly.

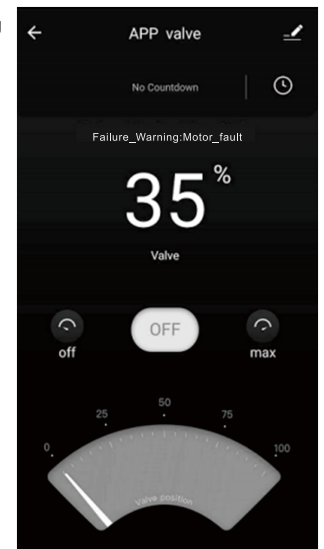


Timer

- Click "Timer"- "Add Schedule", set the time of when to start irrigation(Hour/Minute); Click "Repeat", choose the date(s) for repeat or "Only Once" ; Click "valve", choose the water flow current(%)
- To set when to stop irrigation, click 'Timer', set the time of when to close the valve, choose the date(s) for repeat in corresponding start date(s), back to front page and the setting is down.

Disfunction Notice

- When the vavle is closing, the process could be stopped due to plumb blocking or QT-02's mechanic part is malfunctioning,Wifi/Lock LED truned to red.
- Try open the valve for a moment and switch off again, or use Hand Tool to turn off the valve manually.

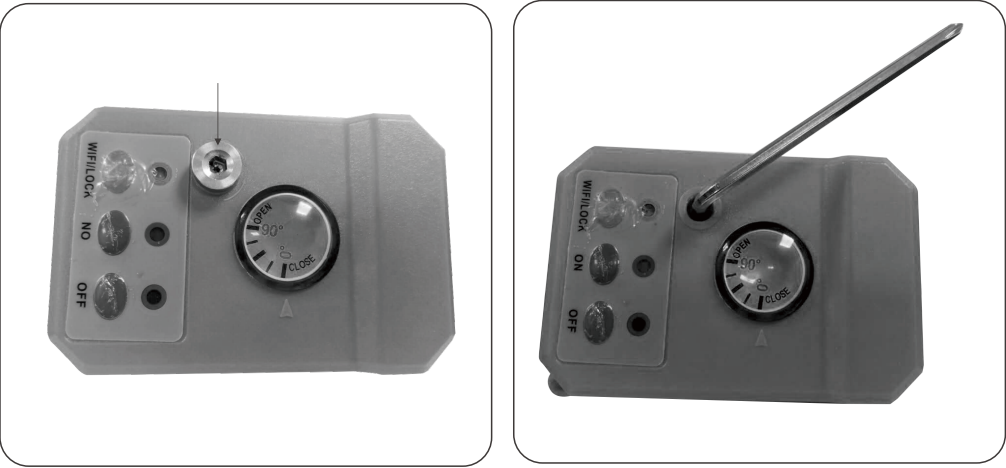


Power off/ Wifi Disconnected

- When QT-02 is out of power supply or disconnected from Wifi network, notice in red is shown on APP. If those were happened in working process, the vavle will automatically close when power resumed or Wifi network connected. You can also use Hand Tool to turn on/off the valve manually.

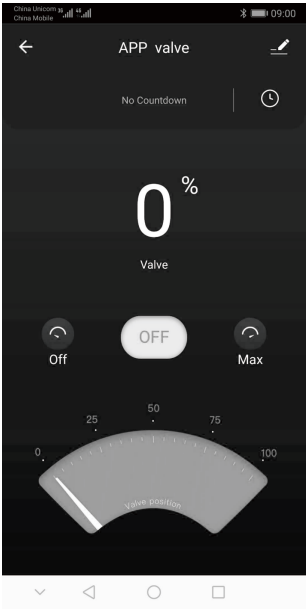
Disfunction Notice

- When the vavle is closing, the process could be stopped due to plumb blocking or QT-02`s mechanic part is malfunctioning, Wifi/Lock LED truned to red.
- Try open the valve for a moment and switch off again, or use Hand Tool to turn on/off the valve manually.

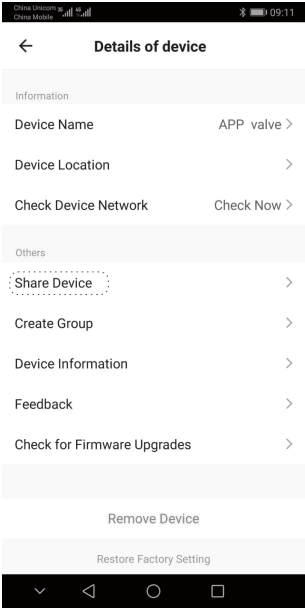


Share Device

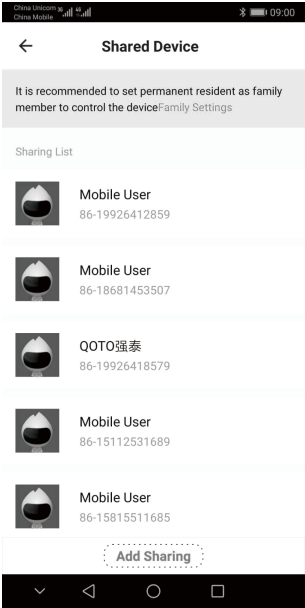
- By few simple steps on APP, you can easily share the device control to your family member(s) . Click 'Edit' on the up-right corner of the operating interface.



- Confirm the sharing device at 'Device Name', then Click 'Share Devices'



- Existing family members are on the list, to add new members, click 'Add Sharing'.



- Put in the mobile number of your family member.

China Unicom 9.4.0
China Mobile 9.4.0

← Add Sharing Completed

Country/Region 中国 +86 >

Account number Enter mobile number or email

- If she or he has not been registered with the APP, the Device Sharing will be failed. Please make sure your family member has been registered before Device Sharing.

China Unicom 9.4.0
China Mobile 9.4.0

← Add Sharing Completed

Country/Region 中国 +86 >

Account number 18682138006

The account is not registered. The register message has been sent.

Cancel Confirm